

OFFICE PROTOCOL

Ablative Procedure + Tensage® Intensive Serum 40

Natural SCA Biorepair Growth Factor Technology with Ablative Procedures Tones & Hydrates

Step 1: CLEANSE

Cleanse and prepare skin with **Tensage® Gentle Gel Cleanser**.

Step 2: PERFORM PROCEDURE

Perform the procedure according to the manufacturer's directions.

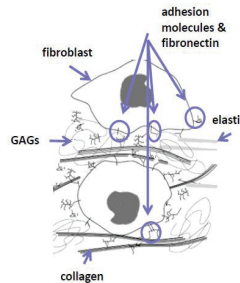
Step 3: SCA BIOREPAIR

Give patient the box of **Tensage Intensive Serum 40**. Instruct the patient to begin using twice daily in the morning and evening once the skin is re-epithelized, usually beginning day 7.

USE OF TENSAGE INTENSIVE SERUM 40 HAS BEEN SHOWN TO HELP:

- Significantly reduce the appearance of redness.
- Improve skin texture, tone and elasticity.
- Optimize procedural outcomes.
- Shorten length of time between procedures.
- Increase patient satisfaction with procedural results.

SCA ACTIVITY ON EXTRA CELLULAR MATRIX ASSEMBLY

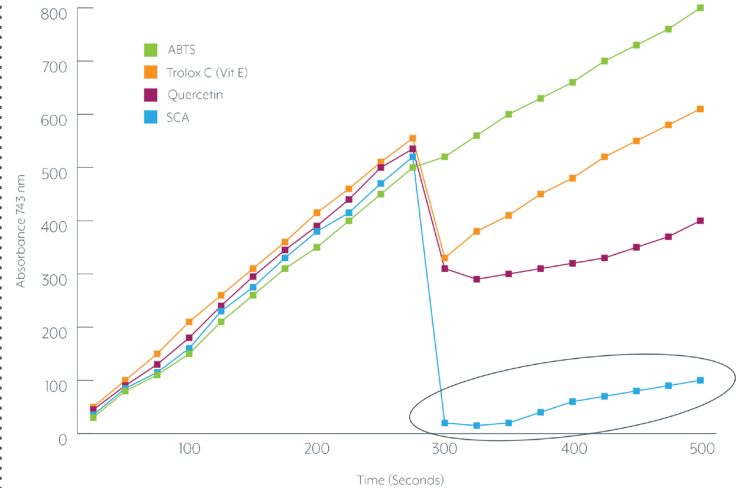


SCA optimizes assembly and organization of ECM resulting in:

- Firmer, more elastic skin
- Faster skin regeneration
- Faster recovery after procedures

ANTIOXIDANT ACTIVITY

- SCA inhibits free radical production
- It demonstrates the most powerful antioxidant activity compared to many of the best-known natural antioxidants



Named "Best Post Procedure Serum" by *New Beauty*

Tensage Intensive Serum 40

The use of Tensage Intensive Serum 40 helps decrease procedural side effects while improving healing time and enhancing results.



Tensage Intensive Serum 40 Ampoule Directions:

While holding the ampoule upright with sleeve in place, crush gently between thumb and forefinger. Remove sleeve and place back on ampoule with swab exposed.

Gently squeeze to begin the flow of the serum, then with light sweeping motions while squeezing, coat the treated area with a generous layer of serum.

Wait 1-2 minutes for serum to absorb into skin before applying other products. It is normal to feel some tingling upon application.

biopelle®

PATIENT POST-PROCEDURE HOME CARE

Ablative Procedures + Tensage® Intensive Serum 40

Natural SCA Biorepair Growth Factor Technology with Ablative Procedures Tones & Hydrates

THIS PROTOCOL HAS BEEN DEVELOPED TO HELP PROVIDE OPTIMAL RESULTS, AND IS ONLY A GUIDELINE. ALWAYS FOLLOW YOUR SKIN CARE PROVIDERS SPECIFIC INSTRUCTIONS.

Date of Procedure: _____

Post-Procedure Follow Up Date: _____

Office Contact Information: _____



Day 1: AM & PM TREATMENT

- Cleanse with **Tensage® Gentle Gel Cleanser**.
- Apply ointment or moisturizer as recommended by your skin care provider.

Day 2 through 6: EXPECTATIONS & AVOIDANCES

- Depending on procedure intensity, skin may be red for the first 3-7 days and then turn darker as your skin begins to slough (peel).
- Swelling (especially around the eyes) may also occur and usually resolves in 2 to 3 days. Sleeping with additional pillows to elevate the head is helpful.
- It is normal for skin to feel tight and/or “sunburned” and dry.
- For the first few days while skin is still sensitive, **DO NOT** scrub or use washcloth. If necessary, cotton may be used as a substitute to a washcloth. Avoid using hot water.
- Do not pick, rub, scrub or irritate your skin in any way while it is healing. If you experience itching, ask your skin care provider about an over the counter antihistamine such as Benedryl (diphenhydramine) and/or ibuprofen or acetaminophen.
- Do not expose the treated area to the sun (even on cloudy days).
 - Remember, UVA passes through house and car windows.
 - UVA exposure can cause skin to darken
- Do not let your skin come in contact with detergents, fabric softeners or dryer sheets. Fabrics that have been treated with these products may irritate your skin.
- Make-up may be worn after the majority of treated skin has sloughed (**usually day 6 or 7**).

Please call the office if you experience intense pain, drainage, severe redness or fever, increased itching, the appearance of a cold sore, blister, or a tingling sensation, or if at any time you feel that you are not healing normally.

Day 2-6: PM TREATMENT

- Cleanse with **Tensage® Gentle Gel Cleanser**.
- Apply ointment or moisturizer as recommended by your skin care provider.

Day 7-12: AM TREATMENT

- Cleanse with **Tensage® Gentle Gel Cleanser**.
- Apply one **Tensage Intensive Serum 40** ampoule to face, neck & décolletage.*

(see below directions on how to use Tensage Intensive Serum 40 ampoule)

*The goal is to keep the skin supported with growth factor technology to help hydrate and nourish the skin during post-procedure trauma so that the skin heals faster, helping reduce the potential of negative effects.

- Nourish and hydrate the skin with **Tensage® Soothing Cream Moisturizer**
- Always apply a broad-spectrum sunscreen daily at all times **EVEN IF INDOORS**.

Day 7-12: PM TREATMENT

- Cleanse with **Tensage® Gentle Gel Cleanser**.
- Apply one **Tensage Intensive Serum 40** ampoule to face, neck & décolletage.*
- Apply a small amount of **Tensage Soothing Cream Moisturizer** to face, neck & décolletage.*

biopelle®

PATIENT POST-PROCEDURE HOME CARE

Ablative Procedures + Tensage® Intensive Serum 40

Natural SCA Biorepair Growth Factor Technology with Ablative Procedures Tones & Hydrates

RECOMMENDED DAILY TENSAGE PRODUCTS TO MAINTAIN RESULTS

Protect your investment by using daily maintenance products in your skincare routine.

CLEANSE:



Tensage® Gentle Gel Cleanser – SCA 2 Biorepair Index

This AM and PM oil-free cleanser gently removes excess oils and impurities to leave skin feeling fresh and clean. Gentle enough to be used daily on compromised skin or following aesthetic procedures. Ideal for all skin types, including sensitive and acne-prone skin.

TREAT:



Tensage® Daily Serum – SCA 15 Biorepair Index

Perfect for all skin types, this elegant, oil-free daily serum can help improve the visible signs of aging. Additional ingredients include niacinamide combined with antioxidants, brightening agents and humectants. Daily Serum is a critical component to help maintain the results from aesthetic procedures and Tensage Intensive Serum therapies. For best results, use twice per day.



Tensage® Radiance Eye Cream – SCA 10 Biorepair Index

This lightly tinted cream can help even skin tone while firming and tightening the delicate eye areas. Includes antioxidants for daily protection, peptides to help improve the appearance of fine lines and wrinkles and brightening agents to help illuminate tired eyes.



Tensage® Stem Cell Eye Cream

A rich, nourishing formulation ideal for the fragile eye area. Tensage Stem Cell Eye Cream helps combat multiple signs of aging around the eyes – like crow's feet, dark circles and under eye puffiness. Additional ingredients include caffeine, peptides, antioxidants, soothing botanical extracts, brightening agents, sodium hyaluronate and retinol. Ideal for PM use. If applied in the AM, apply a sunscreen of SPF 30 or higher.

MOISTURIZE:



Tensage® Advanced Cream Moisturizer – SCA 6 Biorepair Index

This highly emollient formulation is ideal for normal-to-dry or mature skin exhibiting advanced signs of aging and skin damages.



Tensage® Soothing Cream Moisturizer – SCA 3 Biorepair Index

This non-comedogenic cream is ideal for normal-to-oily skin exhibiting the early signs of aging. Skin irritated by acne medications or following dermatologic procedures can also benefit from its soothing relief.

FOR IN OFFICE USE

For more information about Tensage or other Biopelle products, visit www.biopelle.com or call 866-424-6735

biopelle®

AT-HOME BOOSTED TREATMENT PROTOCOL

TREATMENTS

An at-home boosted treatment can help revitalize your skin in between your in-office treatments.

*A treatment of either the **Tensage Intensive Serum 40** or **Tensage Intensive Serum 50** can be done once every three months in addition to your maintenance products. Additionally, give your skin a treatment any time you need to refresh your skin for an event or when you don't have time to see your skin care provider.*



Tensage® Intensive Serum 40 – SCA 40 Biorepair Index

A high level of growth factor that can help promote post-procedural skin repair and healing. Helps to shorten healing time, optimize procedural outcomes and reduce negative procedural side effects — with visible improvement in as little as 24 hours after application. Tensage 40 ampoules are used extensively to dramatically reduce downtime from procedures like microneedling, lasers and chemical peels. For best results, use one ampoule per day for 7 days, followed by one ampoule weekly for 3 weeks in the evening.



Tensage® Intensive Serum 50 – SCA 50 Biorepair Index

For fast, dramatic improvement in the visible appearance of moderate-to-severe skin damage caused by UV light as well as environmental and smoke toxins. Antioxidants, glycoproteins, humectants, peptides and brightening agents have been added to provide additional protection from daily damage and to help reduce the visible signs of aging. For best results, apply once per day in the evening.

Note: Do not apply post-procedure as additional ingredients may cause irritation.

INTENSIVE BOOST TREATMENT PROTOCOL

Normal to Oily and Acne Prone Skin Types

AM: Follow your normal morning routine.

PM:

CLEANSE: Cleanse skin with **Tensage Gentle Gel Cleanser**.

TREAT: Apply **Tensage Intensive Serum 40** to face (neck, and décolletage optional).

How to use the Tensage ampoule: As per the directions for use, while holding the ampoule upright with sleeve in place, crush gently between thumb and forefinger. Remove sleeve and place back on ampoule with swab exposed. Squeeze gently to begin the flow of the serum, then with light sweeping motions while squeezing, coat the treated area with a generous layer of serum. Wait 1-2 minutes for serum to absorb into skin before applying other products. It is normal to feel some tingling upon application.

MOISTURIZE: Apply **Tensage Soothing Cream Moisturizer**.

Repeat evening application of **Tensage Intensive Serum 40** until box completion.

Normal to Dry Skin Types

AM: Follow your normal morning routine.

PM:

CLEANSE: Cleanse with **Tensage Gentle Gel Cleanser**.

TREAT: Apply **Tensage 50 Intensive Serum** to face, neck & décolletage.

How to use the Tensage 50 vial: Open tube per package directions and apply to face with light, sweeping motions. It is normal to feel some tingling upon application. If any irritation or redness occurs, discontinue use, at least temporarily. Each tube contains 2-3 applications based on the area treated.

MOISTURIZE: Apply **Tensage Advanced Cream Moisturizer**.

Repeat evening application of **Tensage Intensive Serum 50** until box completion.

FOR IN OFFICE USE

For more information about Tensage or other Biopelle products, visit www.biopelle.com or call 866-424-6735